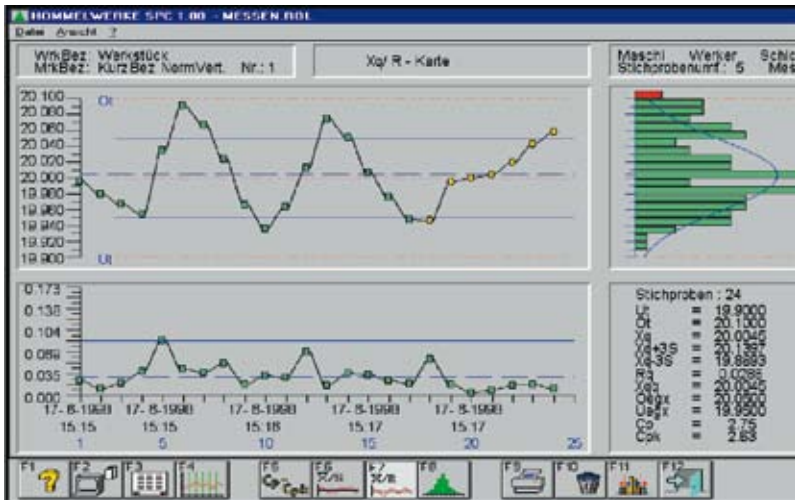


# Z8000 | TurboGear

Gear Evaluation Software

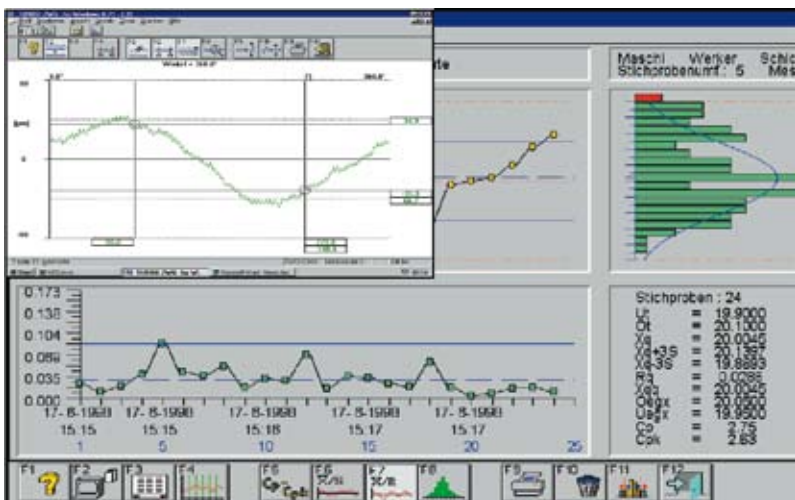


Gear Measurement



The TESTER Z8000 is a PC driven operating system with software, control and evaluation unit for carrying out double-flank gear tests. The interface and software has clear symbols, which guarantee rapid set-ups and minimum operator training.

The double-flank measuring variables  $F_i''$ ,  $f_i''$ ,  $F_r''$ ,  $f_r''$  transverse,  $A_a''$ ,  $A_a''e$ ,  $A_a''i$  are determined, stored and logged according to valid standards. The software guarantees very rapid evaluation of the measuring results. Control and evaluation is fully automatic.





### Features

- Flexible and individual Windows
- Calculation of the double flank parameters in accordance with the existing standards
- 3 security operating levels:
  - Measurement only
  - Measurement, printing and alteration of measurement programs
  - Administrator level
- User friendly function bar operated via mouse or keyboard
- Unlimited number of measurement programs and printouts
- Classification of OK parts with selectable number of classes
- Parameters:
  - Total composite error  $F_i''$
  - Tooth to tooth error  $f_i''$
  - Average tooth to tooth error  $f_i''_q$
  - Runout error  $F_r''$
  - Double flank centre distance parameters  $A_a''$ ,  $A_a''_e$ ,  $A_a''_l$
  - Number of damaged teeth  $N_b$
- Profile analysis with zoom and alignment functions, horizontally and vertically adjustable rulers, trace omission and graphic comparison
- Input and output of gear quality classes according to DIN 3963 and DIN 58405
- Measuring reports can be designed with customer specific header and logo
- Software package for statistical evaluation similar to Ford standard Q101 with histogram, trend,  $C_p$ ,  $C_{pk}$  (option)
- Frequency analysis of the  $F_i''$  profile with Fast Fourier Transformation (option)

